

# Windows XP – eduroam Configuration

Connecting Windows XP to eduroam with an external supplicant

Please note that full administrator rights to your computer are required.

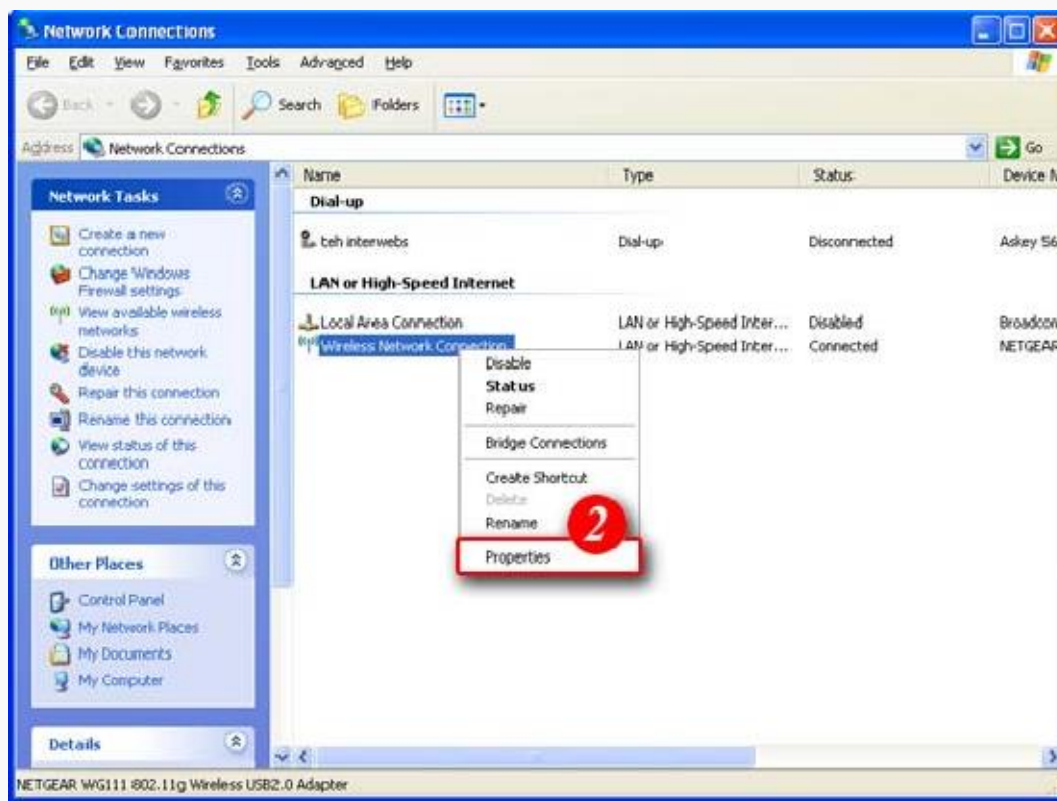
## Preparation

1. Before using eduroam you need to install **SecureW2 client**
2. Click on the link below to download the SecureW2 software. Run the installer and follow the prompts.

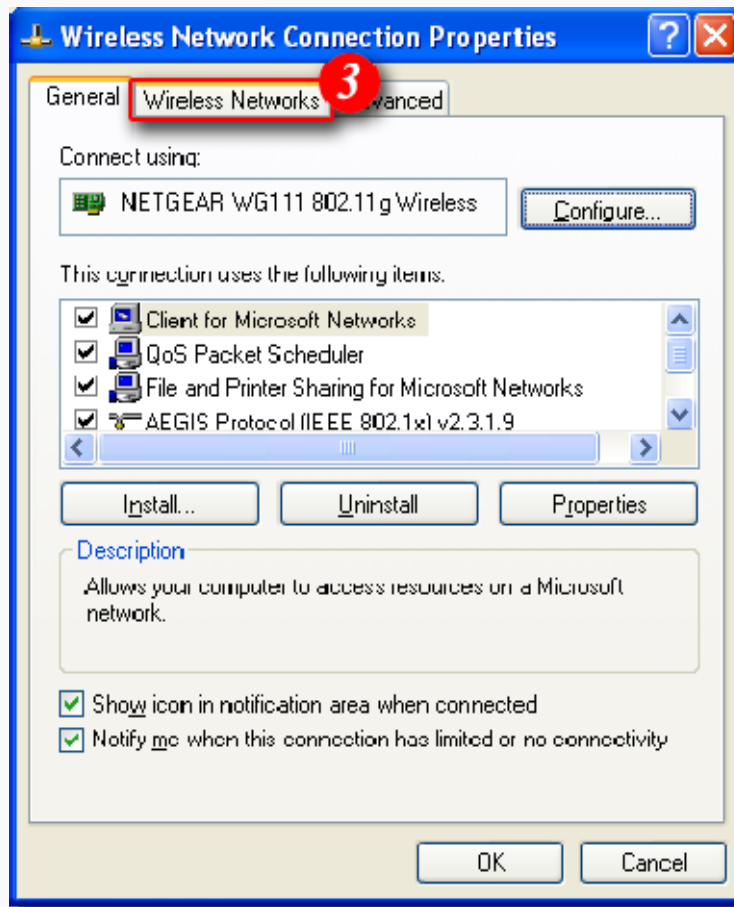
[\[Client for Microsoft Windows XP\]](#)

## Setting up the connection

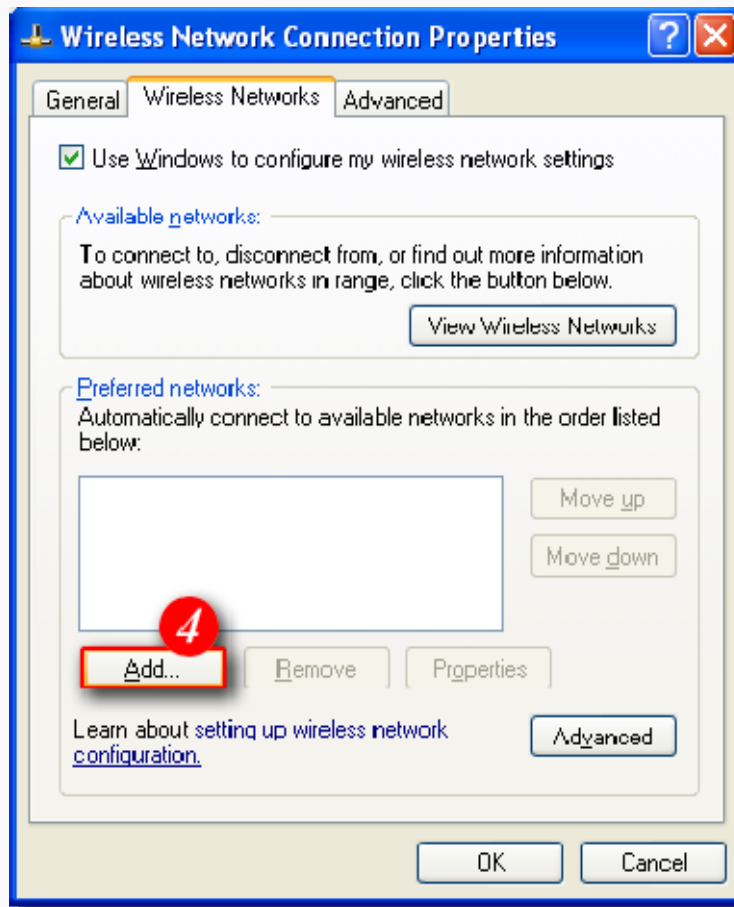
1. Open up your network connections by clicking **Start > Control panel > Network connections**
2. Right click on [Wireless Network connection] and click **Properties**



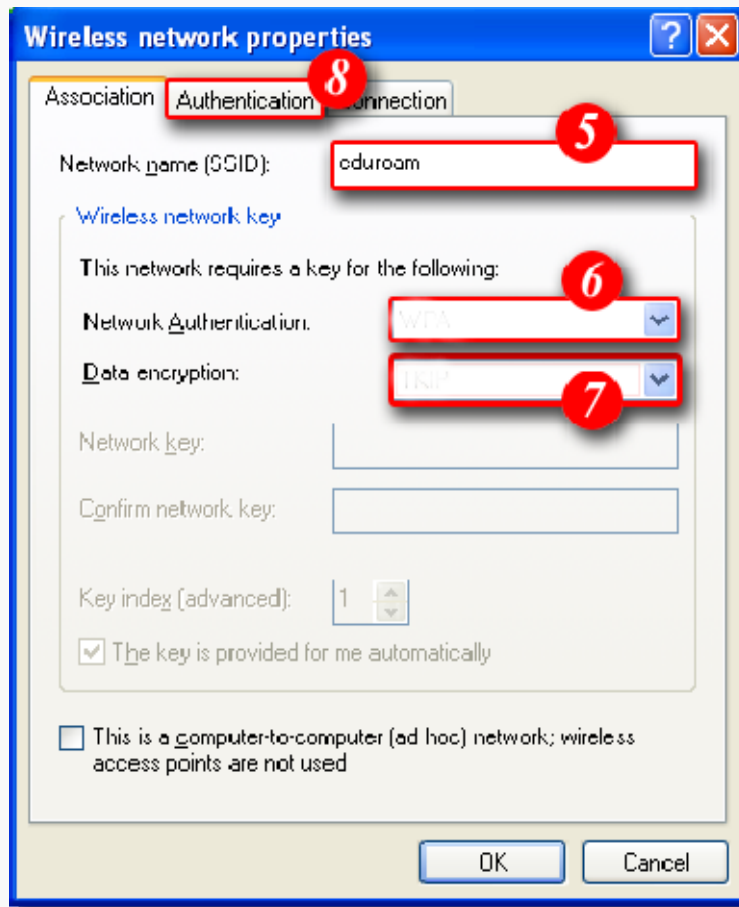
3. Click on **Wireless Networks** tab



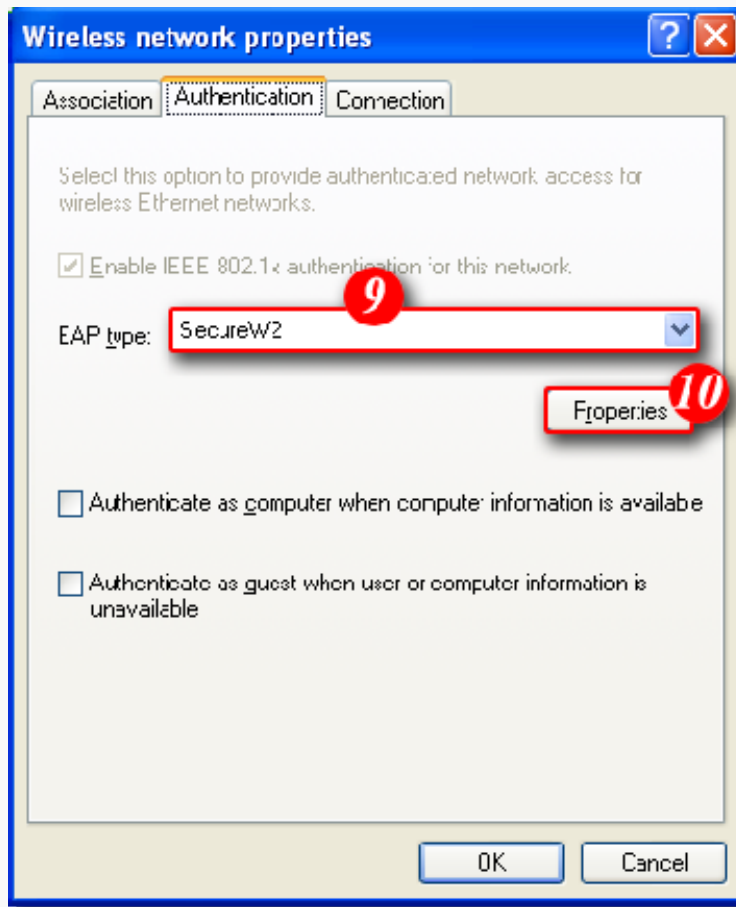
4. Click [Add ]



5. Add **eduroam** as the SSID
6. Network Authentication: **WPA2**
7. Data encryption: **AES**
8. Click the **Authentication** tab



9. Set EAP type to **SecureW2**



10. Click **Properties**

11. Click **New**



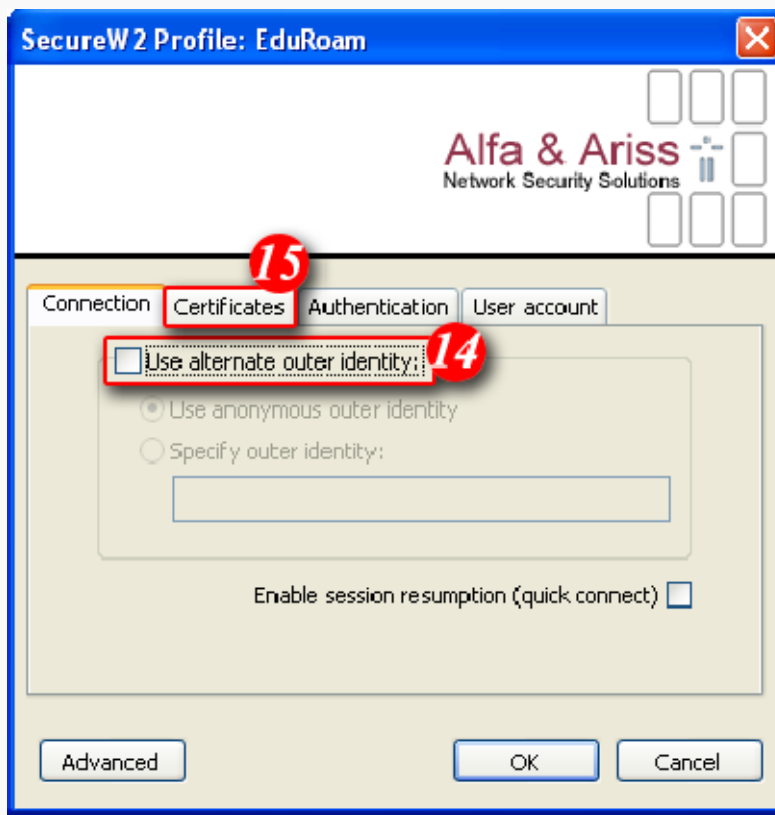
12. Enter **eduroam** as the Profile ID

13. Click **OK**



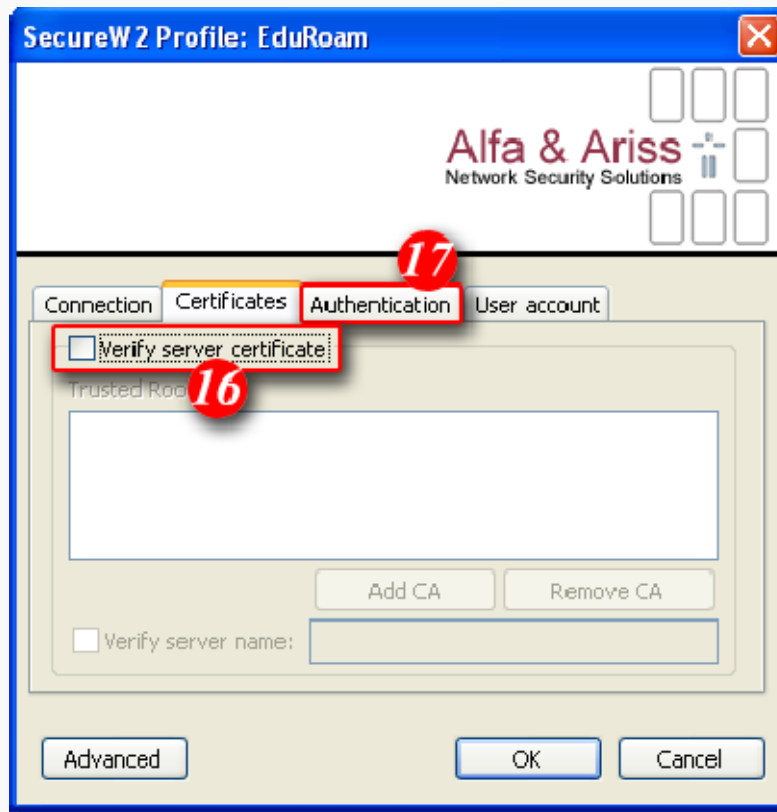
14. Ensure **Use alternate outer identity** is **not** ticked

15. Click **Certificates** tab



16. Ensure **Verify server certificates** is **not** ticked

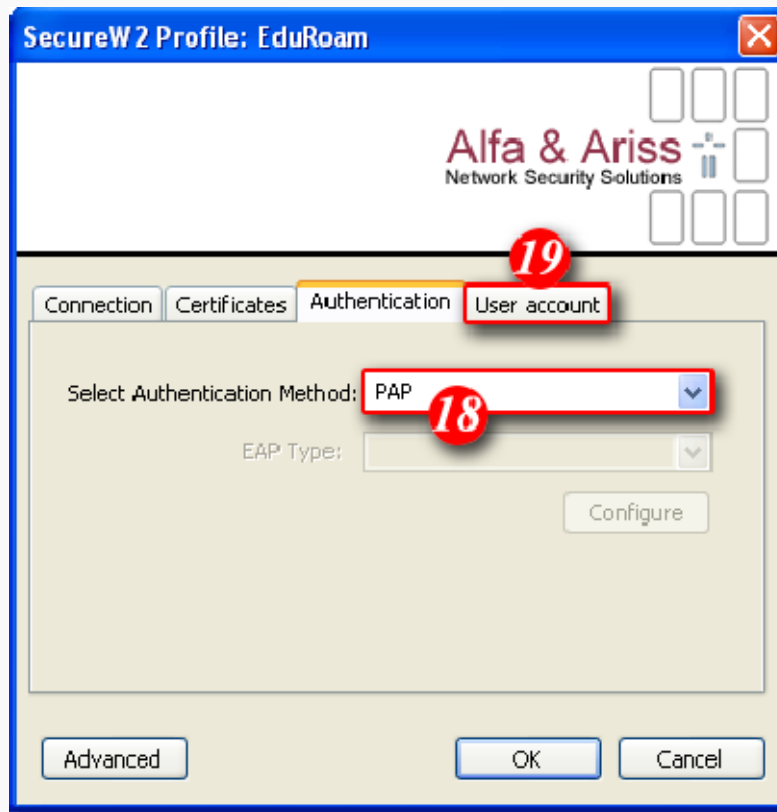
17. Click the **Authentication** tab



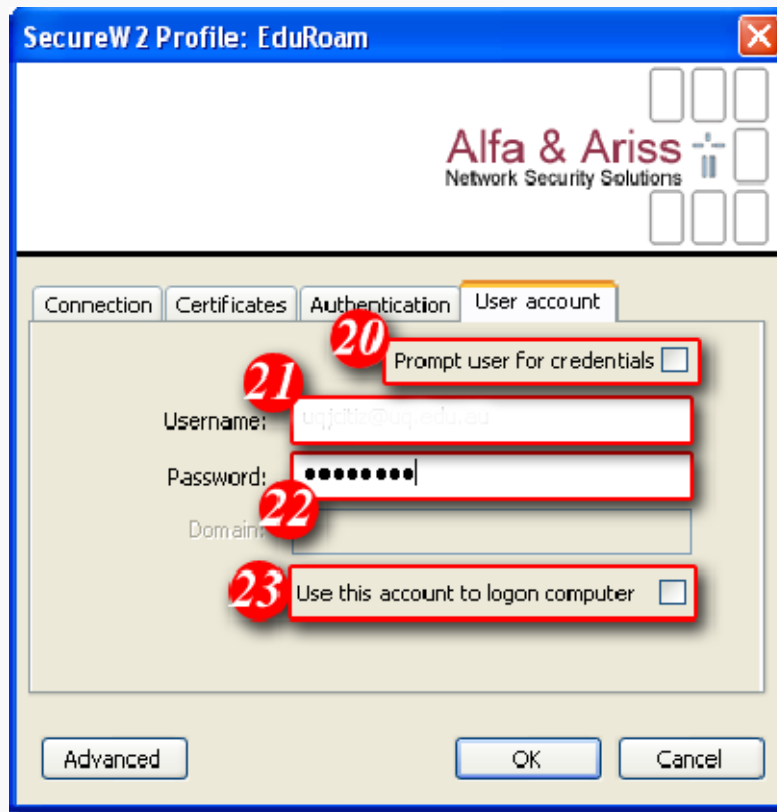
18. Select Authentication Method: **PAP**

19. Click the **User account** tab





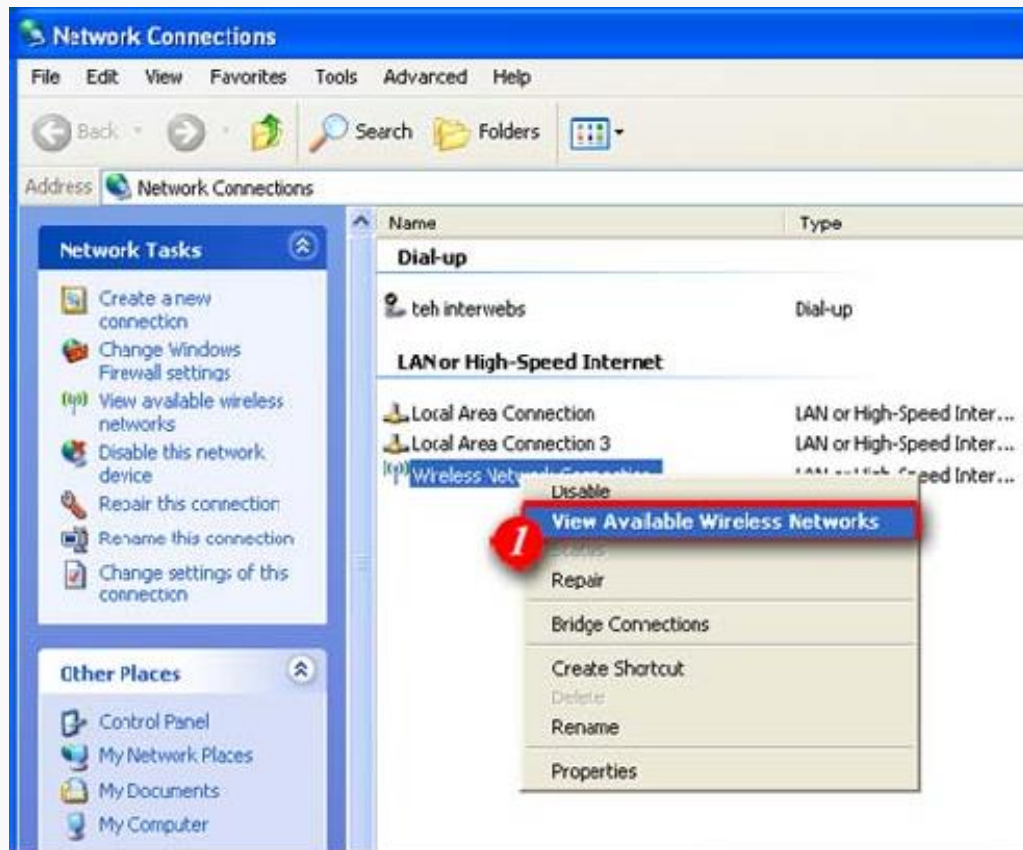
20. Ensure **Prompt user for credentials** is **not** ticked
21. Enter your [username@jkuat.ac.ke](mailto:username@jkuat.ac.ke)
22. Enter your **password**
23. Ensure **Use this account to logon computer** is **not** ticked
24. Click **OK**



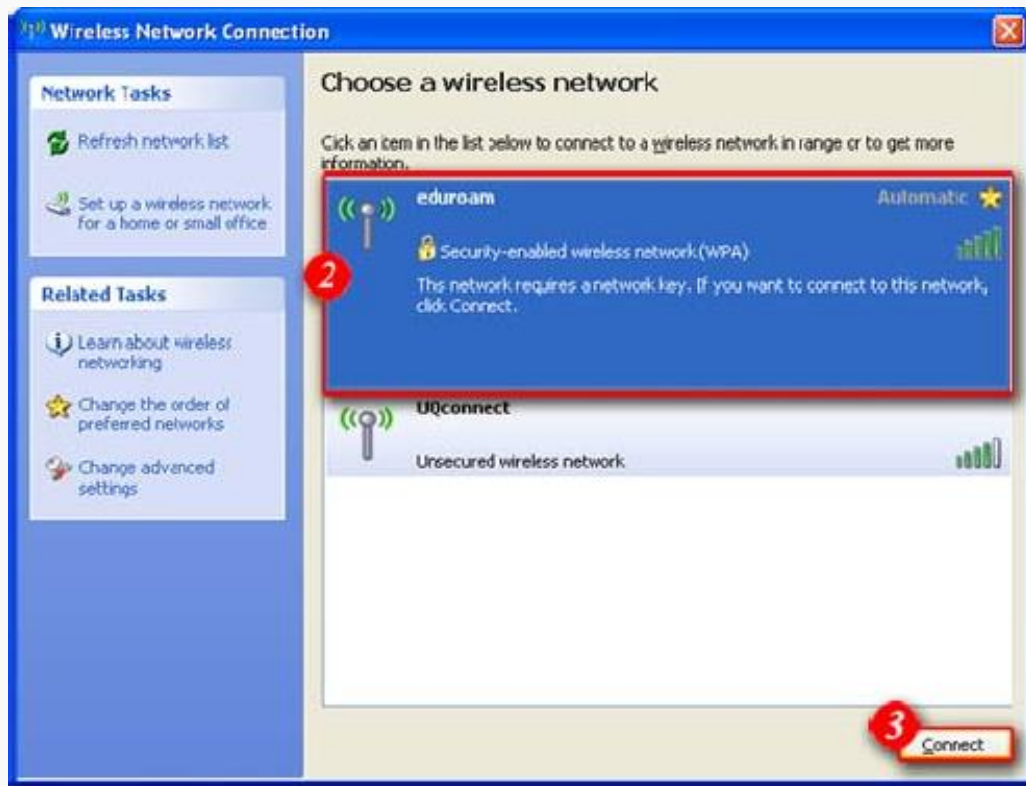
25. Continue clicking **OK** until you are back at **Network Connections**

## Connecting to eduroam

1. Right click on **Wireless Network Connection** and click on **View Available Wireless Networks**



2. Select the **eduroam** network



3. Click **Connect**