

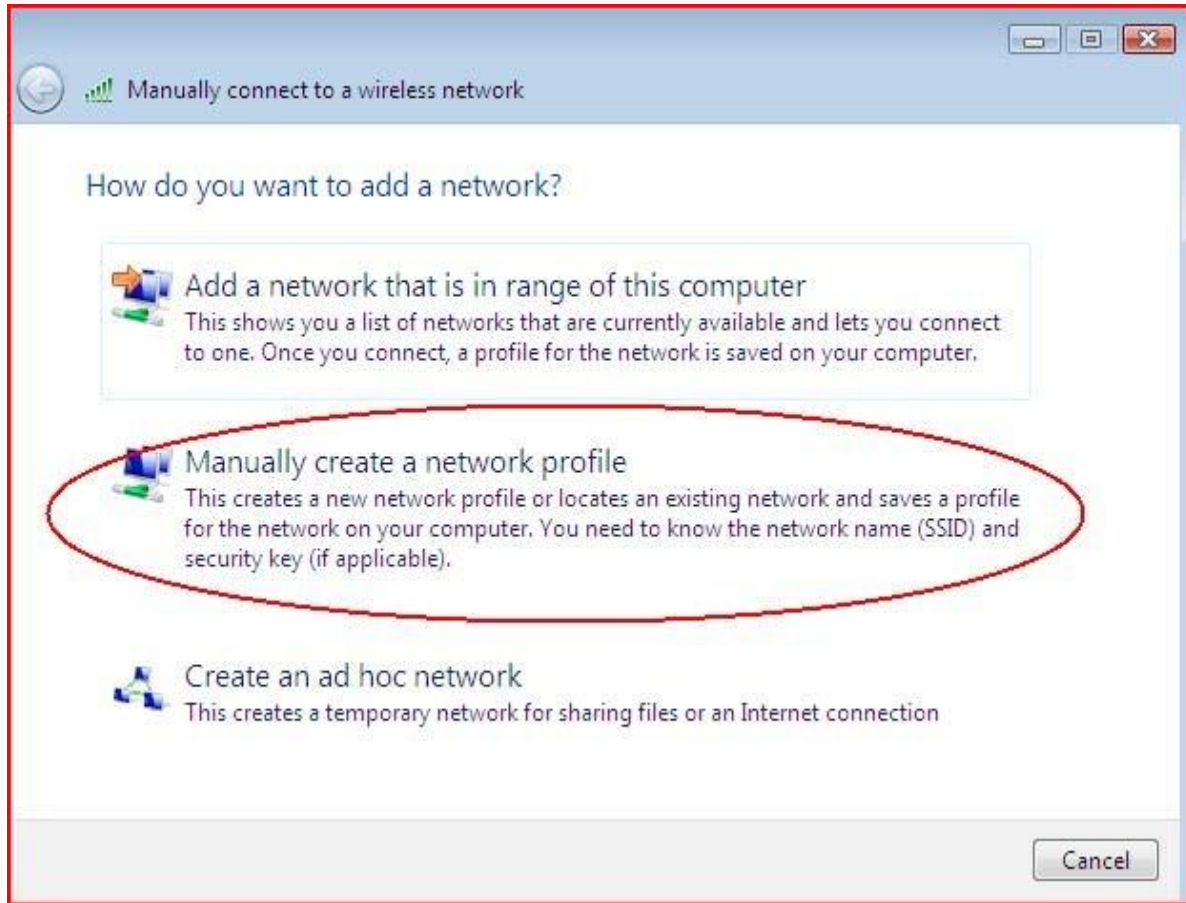
Windows Vista – eduroam Configuration

Configure eduroam – Windows Vista

1. Go to **Start**, then **Control Panel**, then **Network and Internet**, then **Network and Sharing Centre**
2. From the list on the left choose **Manage Wireless Networks**
3. Select **Add**



4. Select **Manually create a network profile**



5. In the **information box**

Manually connect to a wireless network

Enter information for the wireless network you want to add

Network name:

Security type:

Encryption type:

Security Key/Passphrase: Display characters

Start this connection automatically

Connect even if the network is not broadcasting

Warning: If you select this option, your computer's privacy might be at risk.

Next Cancel

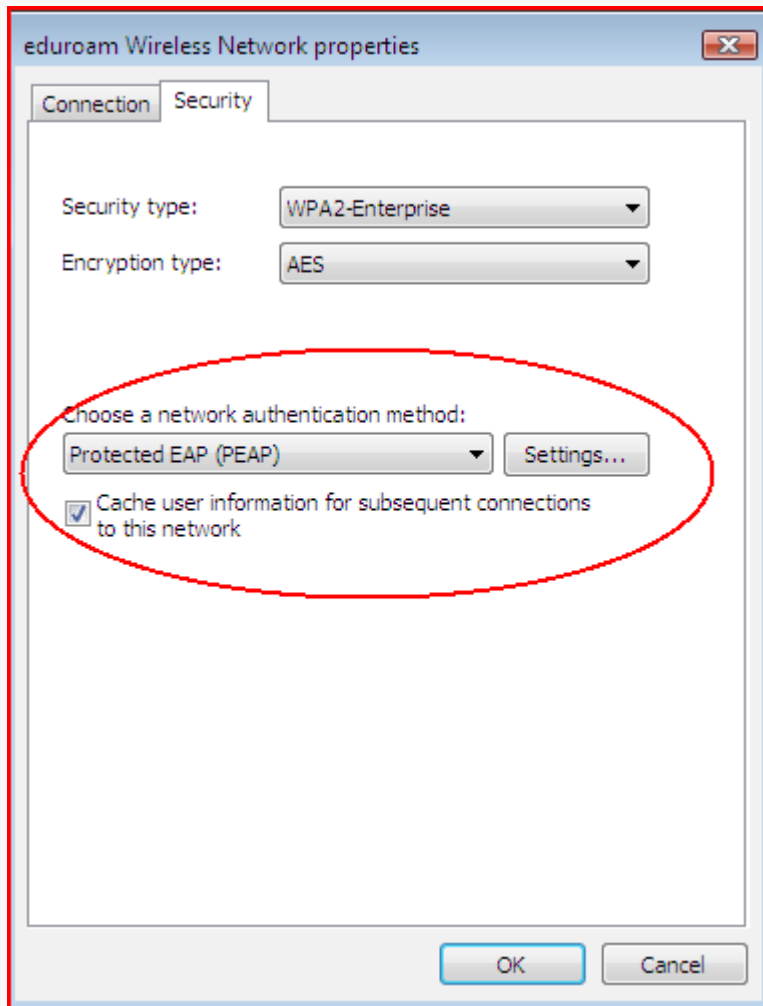
In the **Network name** box, type *eduroam* (note the lower-case 'e')

- From the drop-down lists
- from **Security type** choose **WPA2-Enterprise** (or WPA-Enterprise if your wireless card doesn't support WPA2)
- from **Encryption type** choose **AES** (or TKIP if your wireless card doesn't support AES)
- If the computer has been set up for multiple users then make sure that the additional setting - **Save this network for me only** - is selected.

Select **Next**

6. Select **Change connections settings** then, on the **Connection tab** *uncheck* **Connect to a more preferred network if available**

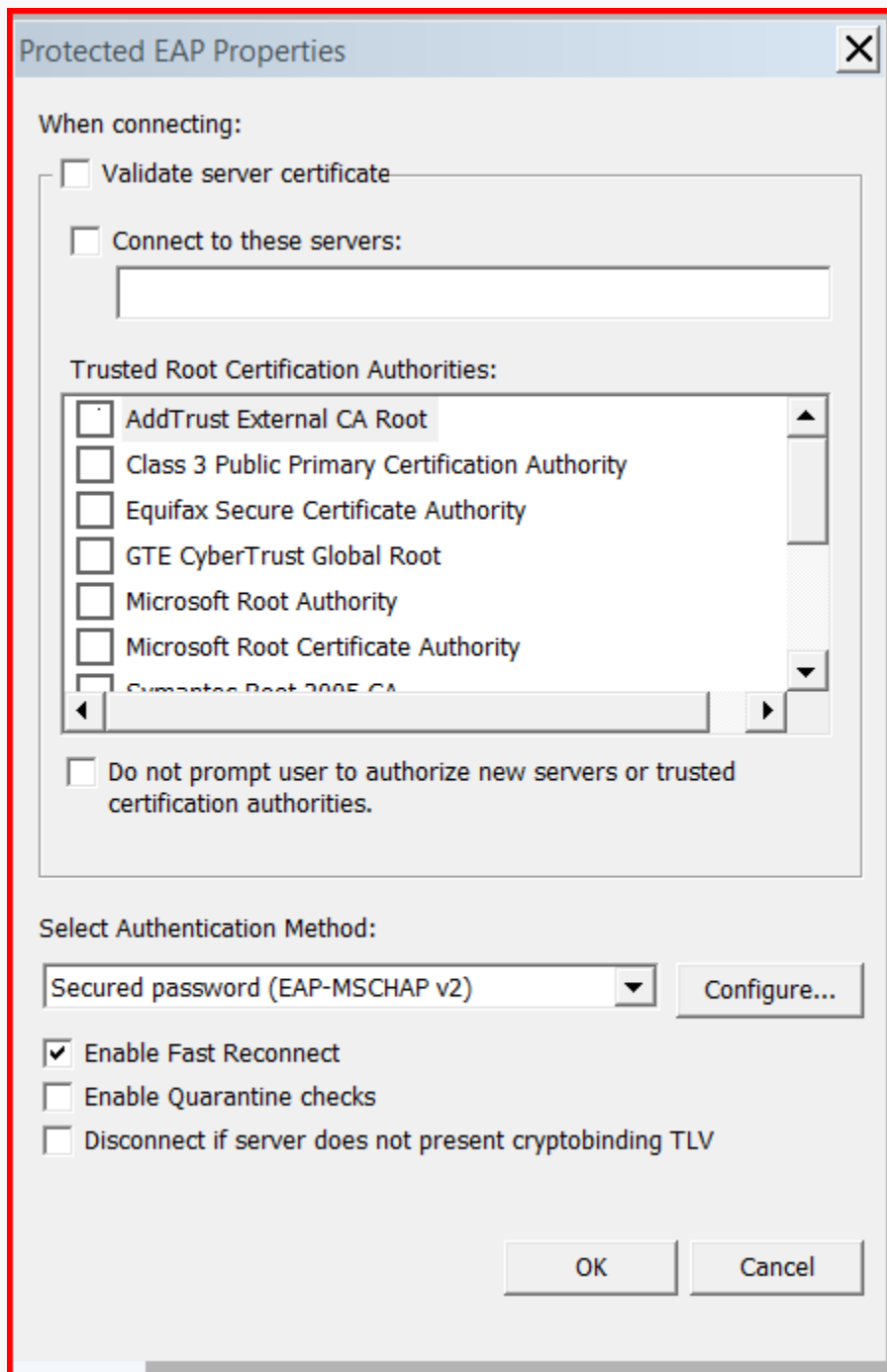
7. Select the **Security** tab



•from the drop-down list for Choose a network authentication method choose **Protected EAP (PEAP)**

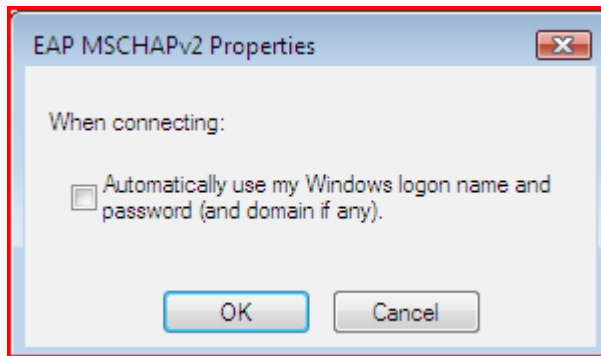
• Select **Settings...**

8. Complete the settings in this dialogue box as shown:



ensure the **Validate server** certificate box is **unchecked**.

9. The drop-down list under **Select Authentication Method** should already have Secured password (EAP-MSCHAP v2) selected - select the **Configure...** button next to it to open the EAP MSCHAPv2 Properties dialogue box:



10. **Untick** the box next to Automatically use my Windows logon name and password (and domain if any) then select **OK**

11. Select **OK** to close all the different dialogue boxes

12. Select **Close** to close the "Manually connect to a wireless network" box

13. After a short period of time, your computer should detect the eduroam wireless network and display a balloon, asking if you want to enter your details to connect to it:



14. Click in the balloon and a dialogue box will appear, prompting you for your credentials



15. Complete the dialogue box using the Username and Password provided by the ICT Helpdesk