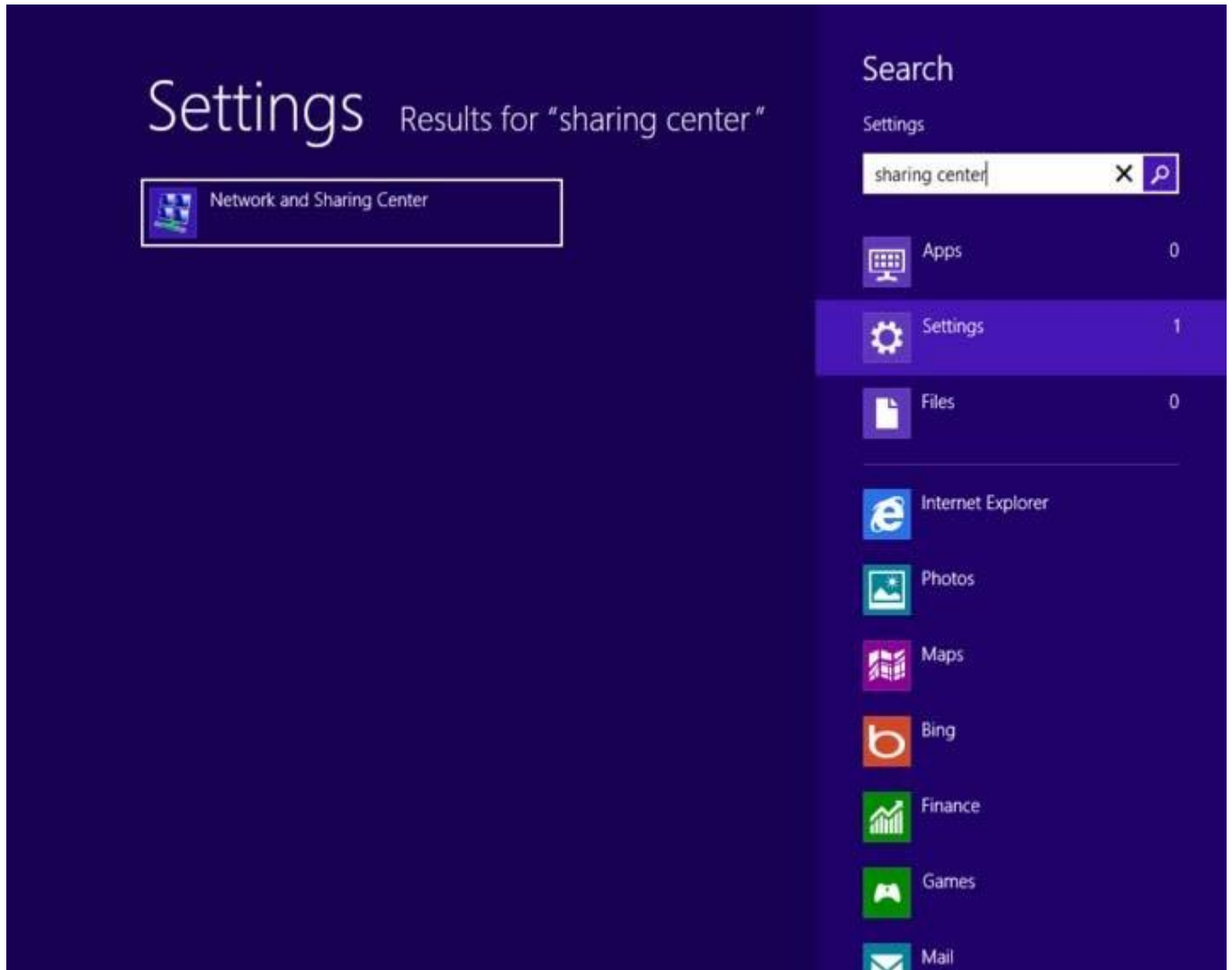
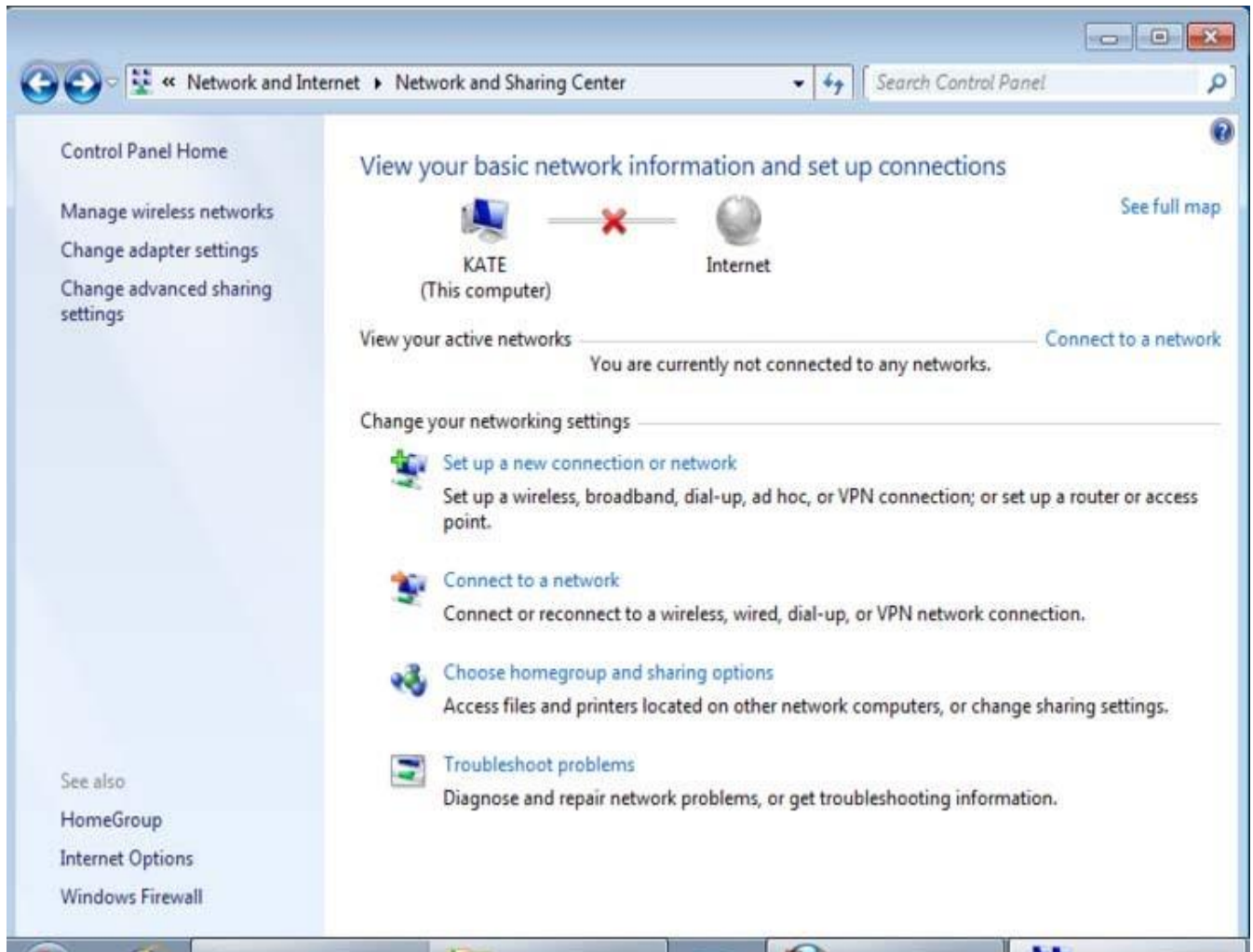


# Windows 8 – eduraom Configuration

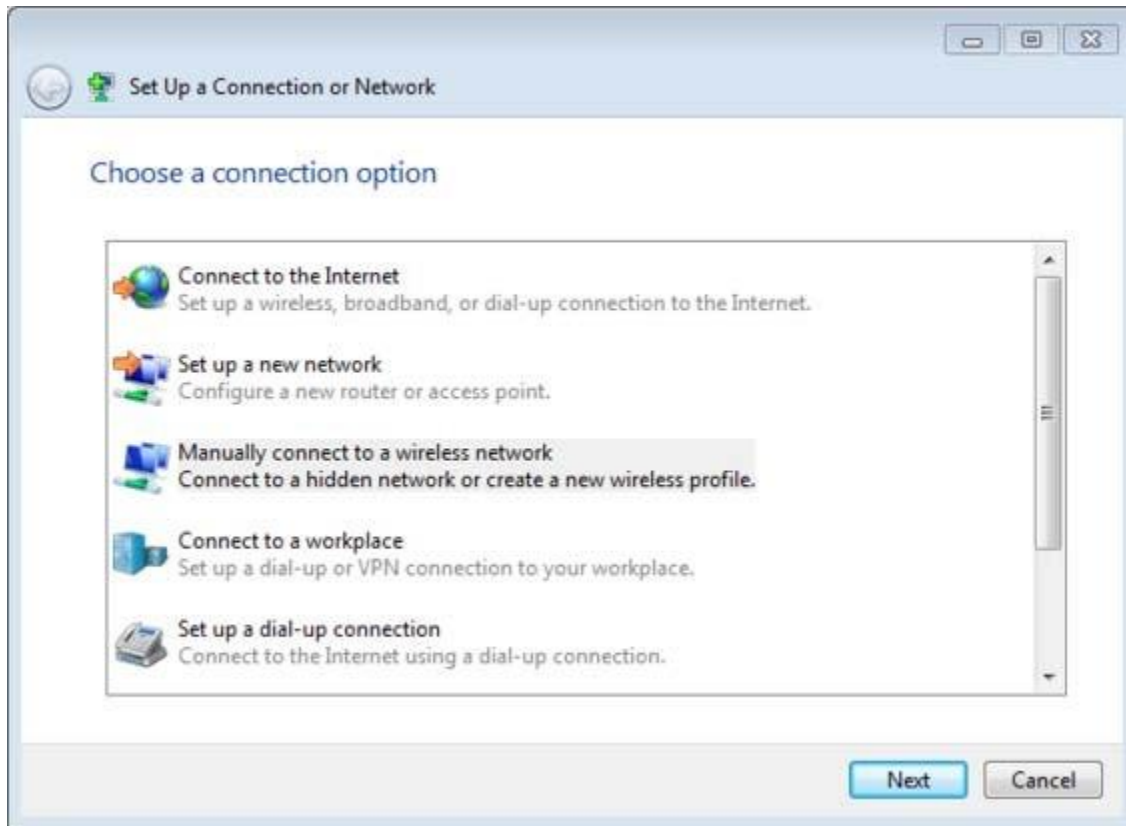
1. From the **Control Panel** open the **Network and Sharing Center** or, from the Settings Search Panel (Winkey+W) search for **sharing center**



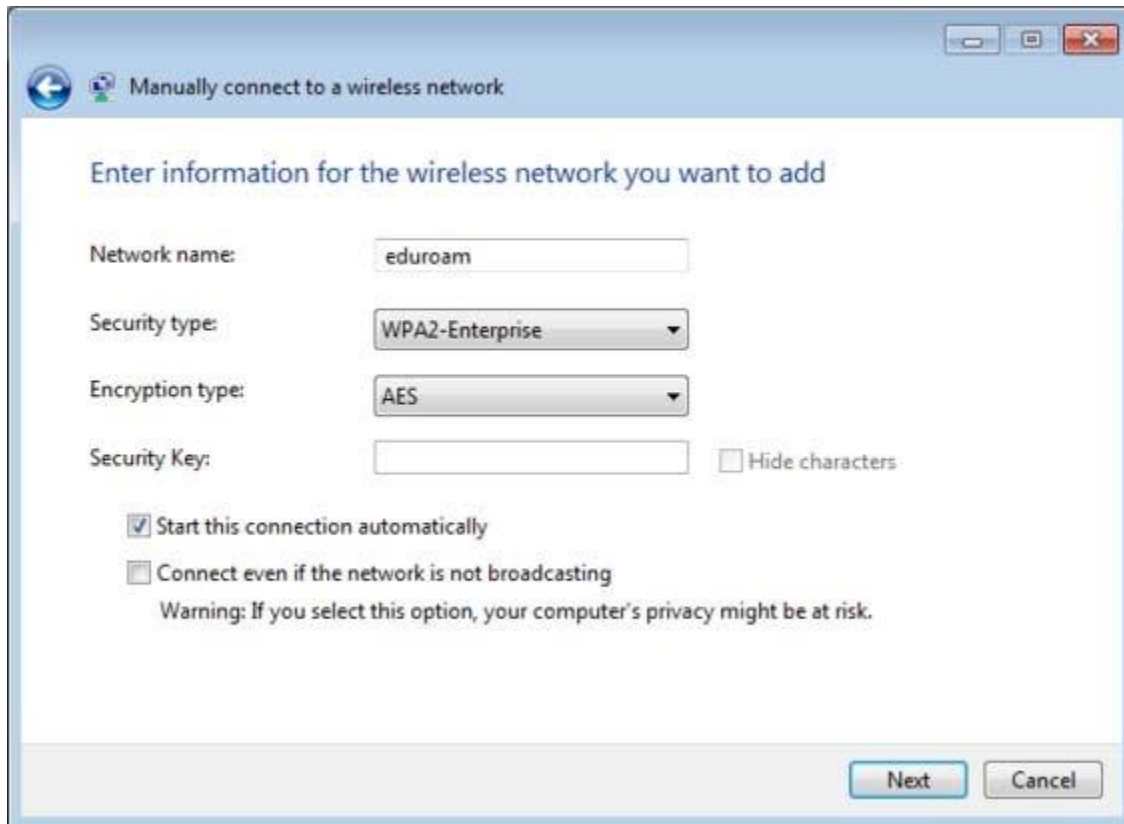
2. From the list of tasks select **Setup a new connection or network**.



3. When asked to choose a new connection option select Manually connect to a wireless network



4. You will then be asked for information about the wireless network.



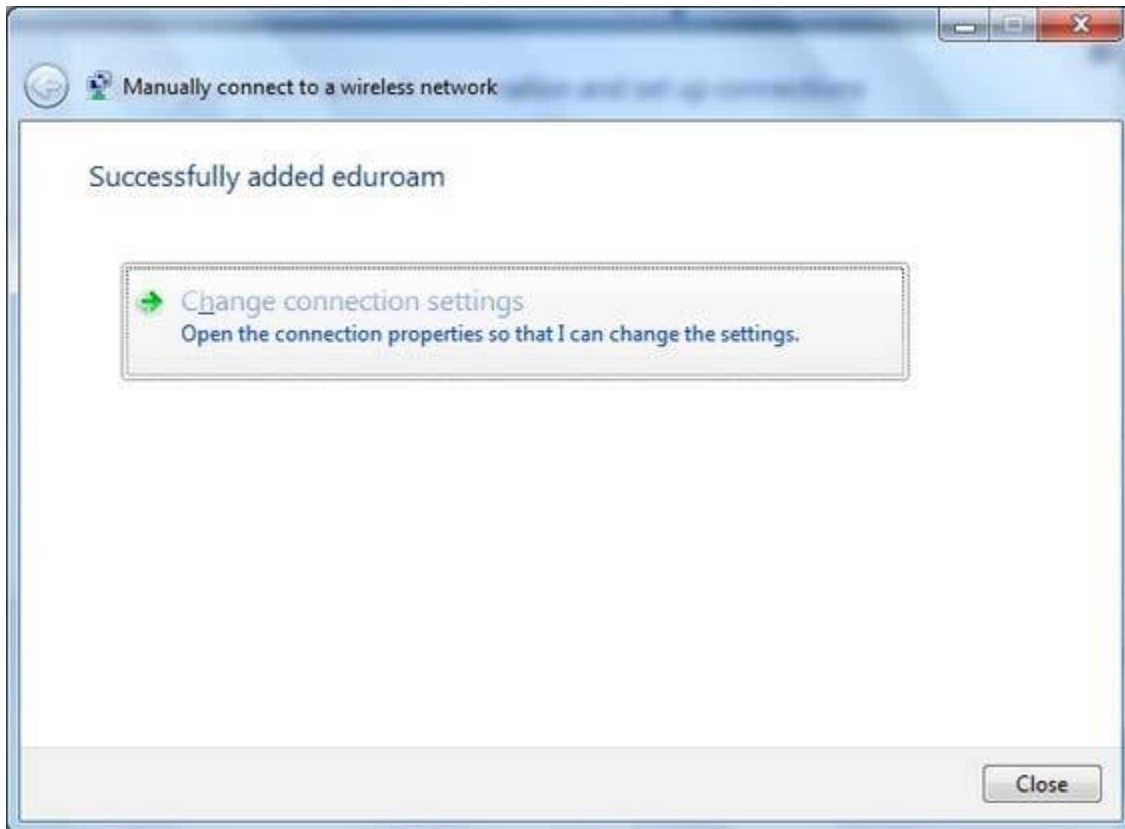
In the **Network name box** , type eduroam (note the lower-case 'e').

From the drop-down lists:

For **Security type** choose WPA2-Enterprise (or WPA-Enterprise if your wireless card doesn't support WPA2)

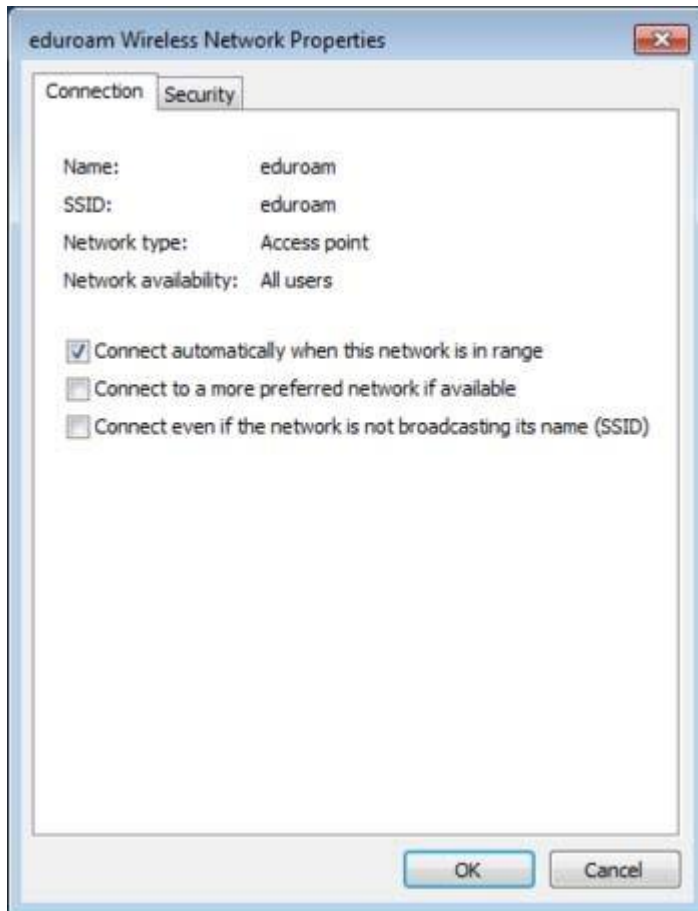
For **Encryption type** choose AES (or TKIP if your wireless card doesn't support AES)

Select **Next** . You should now be told that eduroam has been successfully added. Select **Change connection settings** .



This will bring up the network wireless connection properties.

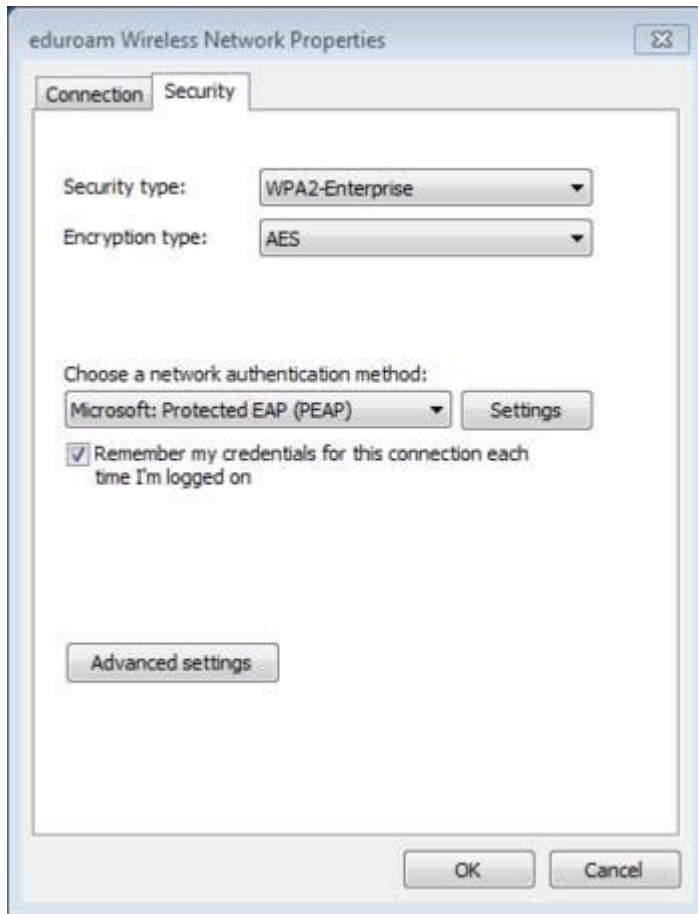
5. On the **Connection tab** uncheck **Connect to a more preferred network** if available. The result should look like:-



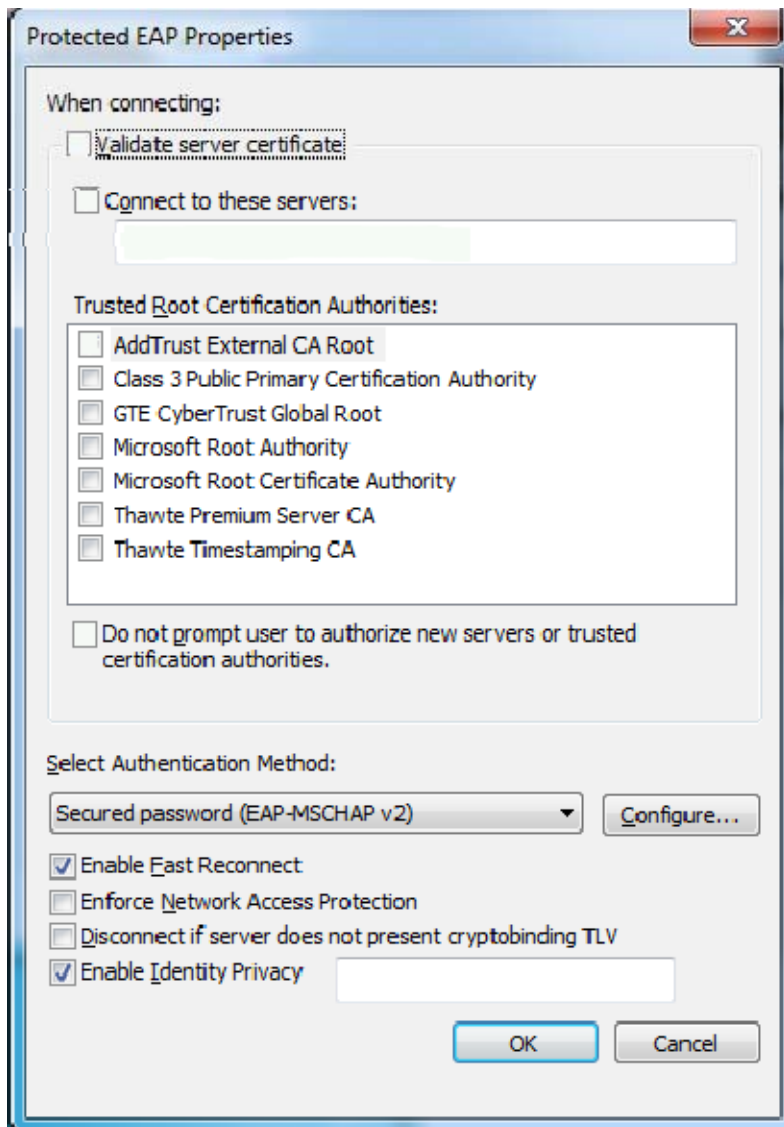
6. Select the **Security** tab.

From the drop-down list for **Choose a network authentication method** choose **Protected EAP (PEAP)**

Select **Settings...**

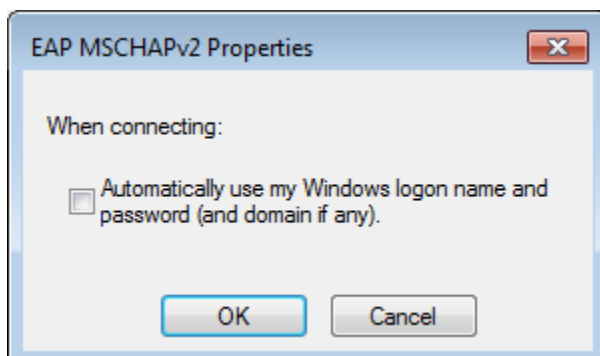


7. Complete the settings in this dialogue box as shown:



Make sure **Validate server certificate** is not ticked.

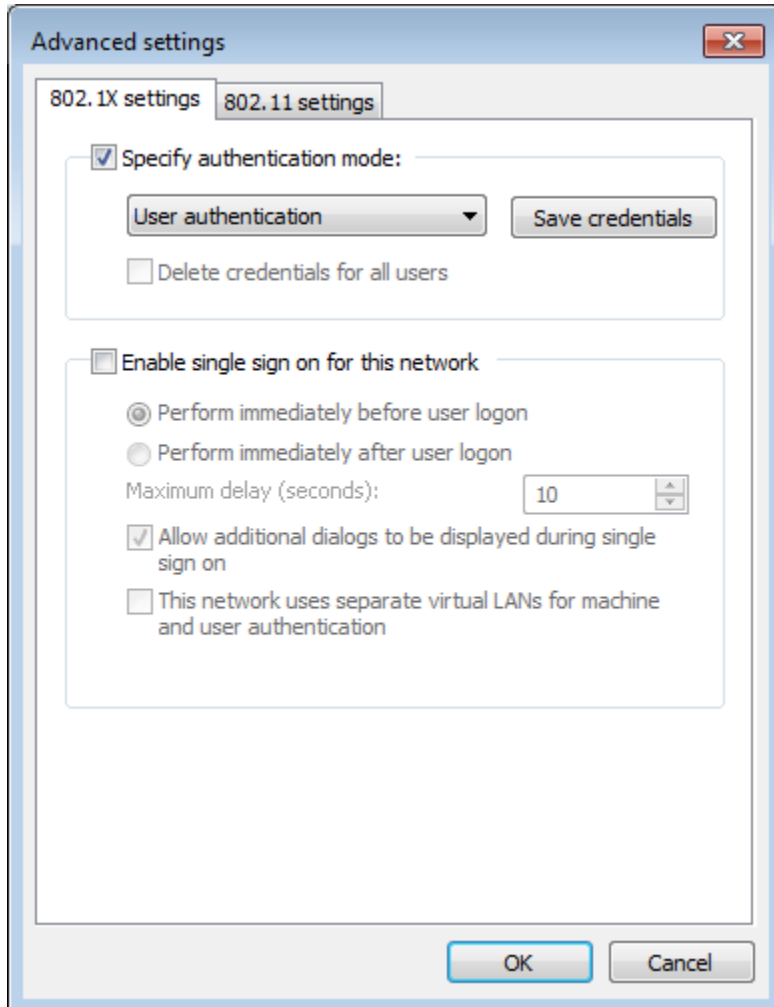
8. The drop-down list under **Select Authentication Method** should already have **Secured password (EAP-MSCHAP v2)** selected - select the **Configure...** button next to it to open the EAP MSCHAPv2 Properties dialogue box:





9. Untick the box next to **Automatically use my Windows logon name and password (and domain if any)** then select **OK**, then select **OK** to close the Protected EAP Properties dialogue box

10. Now, from the Security tab select **Advanced settings**.



11. Check that you have the **802.1X** settings tab and, from the pull-down menu select **User authentication** then select **OK**

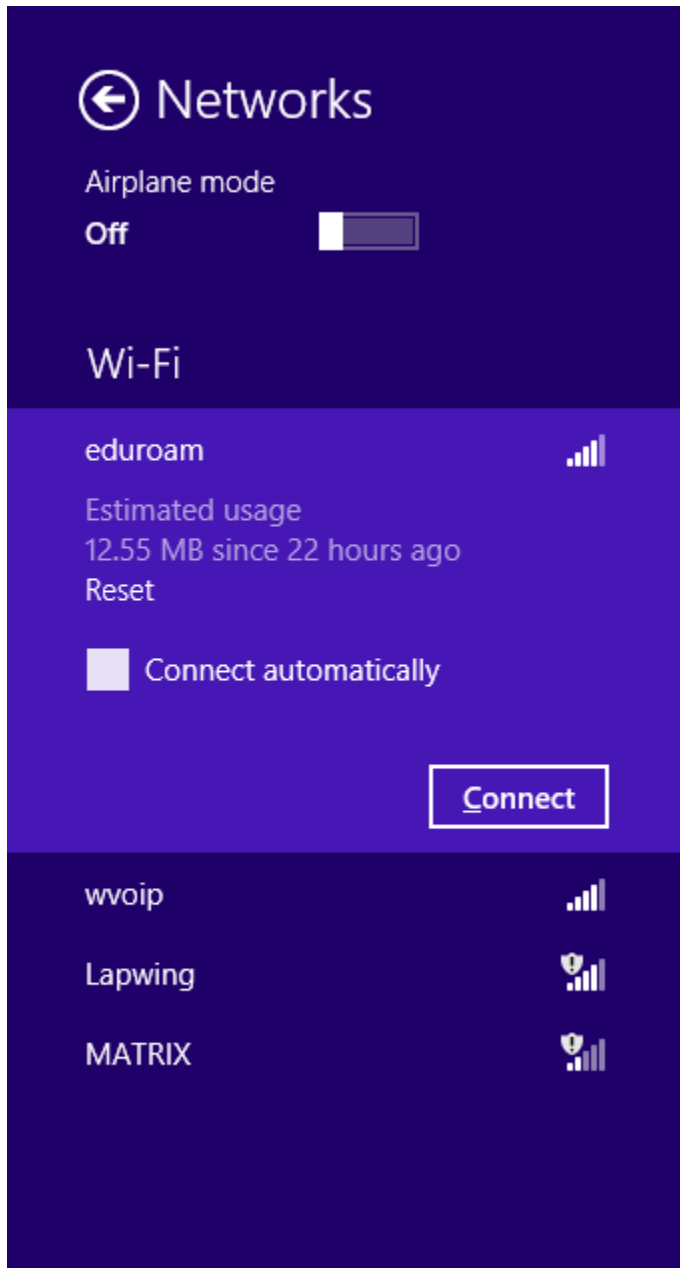
12. Now Select the **802.11** settings tab. Check that **Enable Pairwise Master Key (PMK)** caching is not ticked.

13. Select **OK** to close all the various dialogue boxes

14. Select **Close** to close the "Manually connect to a wireless network" box.

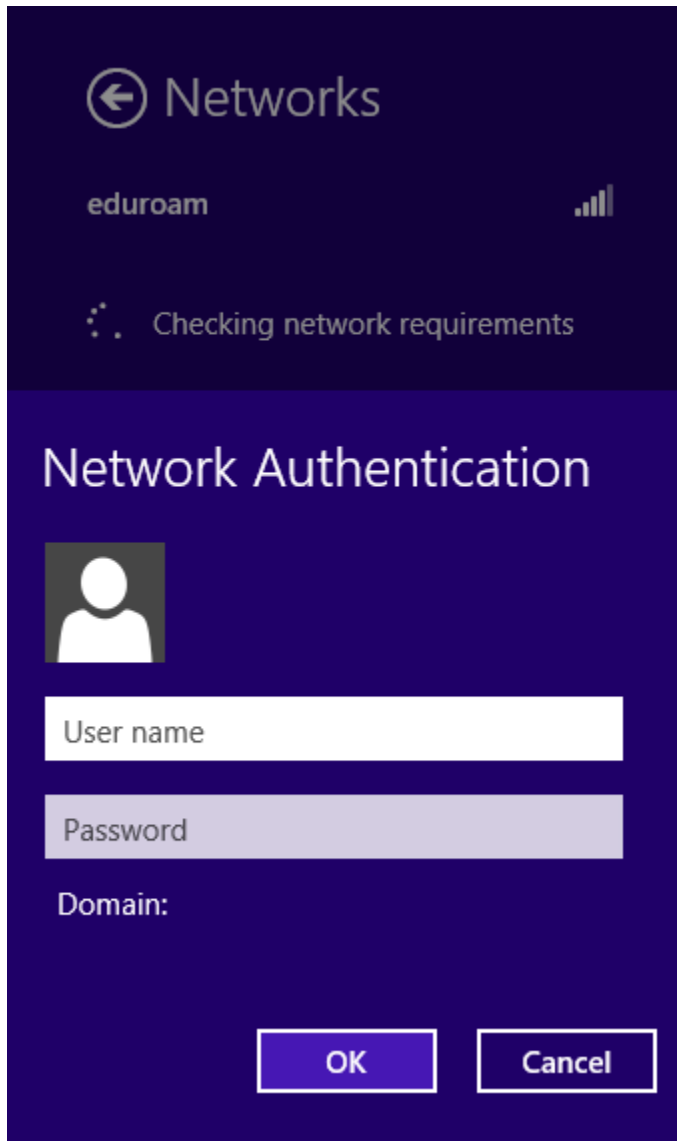
15. Use **Win+C** and **Settings** to find the wireless settings icon. Click on the icon and you should see eduroam listed as a wireless network

16. Check the **Connect automatically** box next to **eduroam** and then click on **Connect**



17. After a short period of time your computer should tell you **Checking network requirements** and then display a dialogue box prompting for your credentials.

18. Complete the dialogue box using the Network Authentication credentials given to you by the ICT hepdesk



Your User name will be the eduroam identifier shown (typically your name or registration number followed by @jkuat.ac.ke where institution.ac.ke is your University domain eg jkuat.ac.ke for Jomo Kenyatta University of Agriculture and Technology)

Your Password will be the password provided by the ICT helpdesk.

19. Select **OK**.

All the settings you have made are stored in your computer and should not need re-entering each time you connect.